

THE APPLETON WITH EATON

# Advertiser

PRODUCED BY THE CHURCH FOR THE COMMUNITY

JUNE 2024

NUMBER 682

WHAT CAN YOU FIND IN  
YOUR GARDEN THIS SUMMER?



See p.10 for  
details of this  
summer's  
iNaturalist  
drive

## **What is Baptism or Christening?**

Baptism or Christening; is there a difference? Although in the church we tend to use the term baptism, both words mean the same thing. Baptism derives from Greek words meaning immersion or ritual washing. Christening means to be baptized into the Christian church, or to be made Christian; and also means receiving a new Christian name. Most of us will have been to a baptism, but what happens and why do we do it?

Recently our congregation at St Laurence's has celebrated the baptisms of Kit and Belle and Archie. All three are very young children, and it is traditional in the Church of England to baptize babies, although any person of any age can be baptized. It marks the first step in response to God's love for us. The minister makes the sign of the cross on the forehead of the person being baptized and dips them in water or pours water over them.

The sign of the cross is the badge of faith in our Christian journey, which reminds us of Jesus Christ's death for us on the cross. Originally, baptism involved full immersion, and this is still practiced in some churches today. But whether it involves a complete soaking or, as at St Laurence, just a splash on the forehead, it has the same symbolic meaning. Our 'drowning' in the water of baptism, where we believe we die to sin and are raised to new life, unites us to Christ's dying for us and his resurrection to eternal life. Baptism also involves the making of promises to worship and serve God. These are made either by the person being baptized or, in the case of infants, by their parents and godparents on their behalf.

Baptism is founded in Jesus's own baptism by John the Baptist, when the Spirit of God descended on him and a voice from heaven said 'This is my Son, the Beloved, with whom I am well pleased' (Matthew 3:16-17); and Jesus instructed his disciples to "go and make disciples of all nations, baptizing them in the name of the Father and of the Son and of the Holy Spirit" (Matthew 28: 19).

The practice of baptism did not originate with Christians. It was practiced in many ancient religions and cultures. The Jews practiced ritual immersion to purify themselves before worship, and converts entered an immersion bath for acceptance into the Jewish community. However, Christians invested a new meaning. Instead of a need for regular ritual immersion, Christian baptism is a once and for all time act of spiritual purification, signifying being cleansed and handed over to a life of faith in Jesus Christ.

It is tempting to see baptism as the finishing line, where we "get saved." But baptism marks the beginning of a journey with God which continues for the rest of our lives, the first step in response to God's love for us.

**APPLETON AND EATON  
VILLAGE SHOW**

**'HAVE A GO,'**



**MONDAY 26<sup>TH</sup>  
AUGUST 2024 2-4<sup>PM</sup>  
IN APPLETON  
VILLAGE HALL**

**KEEP AN EYE ON THE  
SHOP NOTICEBOARD  
FOR SCHEDULE DETAILS**



**PRIZES AND  
CERTIFICATES  
TEAS AND CAKES  
RAFFLE**



## **News from the Appleton with Eaton Parish Council:**

### **New Parish Councillor!**

At the Annual Parish Council Meeting in May, the Council co-opted Chris Mitty as a parish councillor. Please join us in welcoming Chris to the Council!

### **June Meeting – Date Change**

Due to scheduling issues, the date of the June Parish Council meeting has been moved to the 27<sup>th</sup> of June at 7:15pm in the Village Hall.

### **Suggestion box**

There is a suggestion box in the Village Shop. If you have any suggestions for the Parish Council, please feel free to let us know.

Allison Leigh, Parish Clerk

**07767 596 650 / [parishclerk@appleton-eaton-pc.gov.uk](mailto:parishclerk@appleton-eaton-pc.gov.uk)**

### **Evergreen**

Next meeting is June 14th at 2pm

Chair exercise

Why not come and give it a try?

Tea and chat—All welcome

### **Appleton Chapel**

Sunday 9th June 3pm	Family Service
Tuesday 11th June 7:30pm	Healing Service
Tuesday 18th June 7pm	Sausage Sizzle, Salad etc.
Monday 24th June 7:30pm	“Heart to Heart” Counselling fellowship
Thursday 27th June 7pm	Applejack Club
Dr. Ken Stallard	01235 868304

**St Laurence Church  
Appleton with Besselsleigh  
Induction of Rev Wealands Bell**  
The PCC will be delighted if you can join us to welcome  
our new Rector at his Service of Induction to be held  
at 6pm on Tuesday 9<sup>th</sup> July 2024  
Refreshments will be offered  
immediately following the service

### **Appleton History – our Appleton wharf**

About 1800 an increasing number of horse drawn barges made their way up the Thames to Appleton and beyond. There were no locks as we know them – but simple wooden barriers made to hold back water, maybe a couple of feet deep. These simple locks provided a head of water to create a meadow or drive a small grain mill.



But the locks blocked the river to most traffic.

Simple gates were added to the locks – so

that they could be opened. But barges were very heavy and had to be hauled up against the downflow of water. It often required every spare man, woman, child, dog and horse to pull a barge through a lock. All of this effort would cost the bargee much haggled cash.

The bargee would sell his cargo wherever he found a village - goods such as domestic ironware – saucepans etc, salt and coal. He would also buy goods that he could sell on his return to London. Honey and cheese were top of his list; 50 tons of cheese per week was loaded at Cheese Wharf near Lechlade.

Appleton has a Thames wharf – at the end of Badswell Lane. The lane arose here because it runs in a shallow valley down to the Thames – the best route for carrying goods with the least gradient. At the end of Badswell Lane is a patch of land 22 yards square – the wharf; this is shown in the enclosure map of 1832. That trade has long gone but it dose beg the question – what sort of cheeses did Appleton produce – could they be made again?

John EVANS

## APPLETON CRICKET CLUB

At last, the weather appears to be relenting and cricket clubs across the county are preparing for action, with bats being oiled, pitches prepared, as teams get ready to take on the opposition. Appleton is no exception, and we have been busy over the winter months, purchasing new covers and other equipment which we hope will enhance the playing experience.



We are a traditional village club who run a Sunday team, playing friendly 40 over matches starting at 2.00pm, and a 20/20 midweek team, normally on a Wednesday evening. We play both home and away fixtures against other like-minded village clubs where, although victory is very welcome, the main objective is that the game is enjoyed by all during, and as importantly, after the game.

### New Members



We start the year with a solid core of players, and we pride ourselves on always starting the game with 11 players on the pitch. However, as the older players hang up their boots, young people begin new phases in their lives, and others simply move away, the club is always eager to welcome new members.

We are a friendly, inclusive club, where friendships are quickly made, and where we offer a good social programme throughout the season. There is no need to worry about your own levels of experience as we have qualified coaches who will provide you with the ability to learn new skills. You may be a player who hasn't played for some time but would enjoy getting back into the sport, or

a young person who's interested in cricket and wants to give it a go.

All of our upcoming Sunday matches are being played at home up until Sunday June 2<sup>nd</sup>, so feel free to come down to the ground to have a look see, or/and have a chat to one of the Appleton players. You'll find us at the Sports field, off Netherton Road, Appleton.

### RESULTS SO FAR.

The team has played a number of matches to date, with all matches having a close finish



The club has just returned from a tour of Bournemouth and Christchurch, where we ran both town sides to very close finishes. We didn't win, but all who were involved had a brilliant time, and the Club has already started making plans for the next tour. So, if you just might fancy giving it a go and want to know more, give one of our team members, details below a call for an informal chat.

Alternatively, further details can be found on our website [www.appleton.com](http://www.appleton.com)

You can email us at [info@appletoncc.com](mailto:info@appletoncc.com)

President: Chris Jones 07590 216967

Chairman: Roger Gilkes 01865 863640

Club Captain: Phil Atkinson 07588 688824

Sunday Captain: Wayne Geller 07771 962707

---

## **News from Appleton with Eaton Tennis Club – May 2024**

### **LTA Youth Girls Intro Course**

Appleton Tennis Club is delivering an LTA Youth Girls Intro Course, sponsored by Prime Video. The Youth Girls Course has been created specifically for girls, who have never played tennis before. Delivered by our LTA trained Head Coach, the 6-week introductory course is packed with games and exercises to build confidence and skills on court, whilst having fun with friends. The target age, for the Appleton Course is 6-11 years (ideally 8-10 years).



The Course will run on Thu afternoons from 3.30-4.30pm and starts on Thu 6 June 24.

NB. This course is completely separate from the Club's normal Fri Junior Coaching Program and is open to the General Public. Appleton is currently the only Club in the area running an LTA Youth Girls Intro Course!

The course costs £35 for six sessions of coaching, as well as a t shirt, tennis racket and tennis balls so they can keep practicing at home or at your local courts. See Coaching Page on our website for full details (bookings are made online). Any queries contact our Junior Coaching On-line Admin, Paul Haines, [hainesp399@outlook.com](mailto:hainesp399@outlook.com) or Coach Bart, [bart.snowberg@hotmail.co.uk](mailto:bart.snowberg@hotmail.co.uk)

For more information please visit:

Website: <https://clubspark.lta.org.uk/>

**AppletonwithEatonTennisClub**

Facebook: [www.facebook.com/](http://www.facebook.com/AppletonwithEatonTennisClub/)

**AppletonwithEatonTennisClub/**

Instagram: [www.instagram.com/](http://www.instagram.com/appletonwitheatontennisclub)  
**appletonwitheatontennisclub**



## **Appleton Community Shop news**

**June 2024**

### **Summer foods**

We have Strawberries from Evesham and Asparagus from Stanton St John. Both are delivered fresh on Thursday along with our delicious Mayfield eggs. As the summer progresses, we will also have raspberries.

### **New cheeses**

We updated our range of local cheeses last month and we are getting great feedback (and sales). However we are always on the lookout for other local/English cheeses we might try – so if you have any suggestions, just let us know.

### **Birthday party**

Thanks to the Directors for hosting the covid delayed 20th birthday celebrations (we're up to 24 years now so watch out for the 25th celebrations!). Whoever knew that the Directors were superb canapé makers! And especial thanks to Juliet and Colin for allowing us all into their lovely house and garden on a beautiful warm and sunny evening. The shop quiz was great fun (who knew all those interesting facts?) and it was lovely to see and chat with so many “colleagues” – what a great community!

### **Later opening hours**

From June 8<sup>th</sup>, the shop will stay open until 3pm on Saturdays from until the end of August.

### **Friday supper club: Waldorf salad – Appleton style**

Cut 2 little Gem lettuce into 4 long quarters. Peel and slice one of our pears over them, then crumble over some Kingcott Blue cheese along with a few broken walnuts. Make a dressing of rapeseed oil and white wine vinegar (4:1 ratio), a little local honey for sweetness and season. Pour on as much as you want (be generous!), leave the salad for about 10 minutes to relax, then enjoy.

### **Shop opening hours**

Monday-Friday: 7am–6pm

Saturday: 8am–3pm for summer

Sunday: 8am–12noon

### **Post office**

Mondays and Thursdays, 9am–1pm

Shop telephone: 01865 863191

Email: [appletonship@gmail.com](mailto:appletonship@gmail.com)

Follow us: <https://www.facebook.com/appletoncommunityshop>





## Shop Monthly turnover

	2021/22	2022/23	2023/24
May	£21,608	£23,699	£27,338
June	£25,008	£25,008	£29,347
July	£26,461	£27,427	£28,208
Aug	£23,714	£25,651	£24,841
Sept	£22,317	£24,070	£24,479
Oct	£21,125	£24,066	£26,318
Nov	£21,844	£24,697	£26,600
Dec	£24,552	£26,788	£27,354
Jan	£20,223	£22,995	£24,690
Feb	£18,923	£23,195	£24,144
March	£22,318	£27,445	£26,109
April	£21,454	£23,622	£24,762



Suffering from the state if the roads?  
Fallen into a pothole and ended up in Patagonia?

Don't take it in silence! Oxfordshire County Council have set up a web page where people can report potholes. Go to

<https://>

[fixmystreet.oxfordshire.gov.uk/](https://fixmystreet.oxfordshire.gov.uk/) and tell them how bad our roads are. The more feedback they get the likelier they are to take action.

## Appleton Voluntary Transport Scheme (AVTS)

We try to arrange transport to medical and dental appointments in Abingdon, Oxford, Witney and Wootton for residents of Appleton, Eaton, Fyfield and Besselsleigh, who have no other means of transport. The contact telephone number is 07503 447884. Leave a message if your call is not answered and we will get back to you.

Please note that

- Covid safety measures remain in force and masks need to be worn
- We need at least 48 hours notice of an appointment
- There is a small charge to cover the driver's costs.

Demand for our service is picking up again, but we are very short of drivers. If anyone would be happy to help, please do contact us.

## **Green Appleton**

### **iNaturalist**

We'd like to say a huge thank you to for everyone using iNaturalist to record the flora and fauna in our beautiful Parish. Appletonians have really taken to using this app, and we have almost 1300 observations of 581 species.



At present we have a wonderful number of observations in and around Besselsleigh Woods but we'd like to widen the circle a little.

As the weather is at last starting to warm up, could you spend some time every week looking at what's happening in your garden? It can be a plant, minibeast, bird - in fact anything cultivated or wild. Don't worry if it's not pretty - we're interested in everything.

If you're new to iNaturalist, just head over to our shiny new website:

[www.greenappleton.org.uk/iNaturalist](http://www.greenappleton.org.uk/iNaturalist). If you would prefer one to one help you can email us at [greenappleton2021@gmail.com](mailto:greenappleton2021@gmail.com). We'd be delighted to get you started.



Don't forget there's a prize for the 1500th observation!

Do you have anything green to talk about? It would be great to publish it on the Green Appleton blog. Please pass on any snippets to [helen\\_stedman@yahoo.co.uk](mailto:helen_stedman@yahoo.co.uk)

### **Photo Stations**

We are delighted to announce that we now have our 4th photo station in the churchyard. We'd like to thank the PCC for giving us permission. This photo station is positioned to view our restoration project over time in the South Side of the churchyard. You'll find it just as you go around the bell tower. The same rules apply - each time you pass take a quick photo and upload it to the Green Appleton website. We hope to record the changes in flora and fauna over the coming months and years. We'll start to see the wild flowers appearing soon so keep taking photos. In the meantime, despite the bluebells starting to fade in the woods, other flora will naturally take over. We're very keen to record each of the seasons so do please continue to snap away! Thank you.

---

## **Appleton WI**

Our May meeting was particularly enjoyable. Our president had the simple idea of inviting members to bring along memories and old or interesting articles to talk about. We sat in a big circle and listened and looked and marvelled, a very pleasant afternoon. On June 20th at 2pm in Appleton village hall, we shall be entertained by the Roger Smith singers, and we look forward to that. There will be a raffle and a bring and buy stall. Visitors are always welcome.

Elaine Flint

01865 861838

## **Appleton with Eaton History Group**

AwEHG presents: A Summers Walk.

Join us on a free 1.5 mile walking tour of Appleton inc Besselsleigh wood

Led by AwE History group member and former resident Peter Stimpson.

Hear tales of how the village has changed over the centuries.

See photos, objects and secrets that reflect how our village life was for our forefathers

Date: Thursday 20<sup>th</sup> June 2024

Start time: 19:30

Start place: The Village Map, Whites Forge OX13 5LG

No need to book, just meet at the village map in time for the start of the walk.

The walk will include some stiles and rough ground. Suitable footwear is advised.

## **Appleton Memories**

In early 1960 when we came to Appleton, there was a men's football team, which my husband joined. They played their matches in a field behind the Three Horseshoes. The team were all from Appleton. The club was run by Brusher White – his two sons Dennis and Kenny were players.

The matches did not end on the pitch, but mostly in one of the three pubs in the village – mostly at closing time.

In 1965 a fete held in Park Lane raised enough money to buy the sports field. The fete was opened by Dudley More.

In the 1970s there was a boys' and a ladies' football team, who all played on the sports' field.

These are my memories of football in the village. There are probably people who have other memories of their fathers or grandfathers who played cricket or football for Appleton.

J. Burgess

## **Summer Garden Open Days 2024 - in aid of CPRE Oxfordshire**

*£10 per head, £5 for under 16s, under 10s free. Teas will be available – donations welcome.*

*Places limited so please reserve in advance – see [www.cpreoxon.org.uk](http://www.cpreoxon.org.uk)*

### **Wednesday 5 June, 3pm-7pm College House, Stanton St John**

The 800-year old St John the Baptist Church forms a unique backdrop to this wonderful garden, complete with fruit trees, walled garden and even the odd guinea fowl! June should be the perfect time to see the herbaceous borders in all their glory.

### **Sat 6 July, 2.30pm-5pm Coopers & Woolstone Lodge, Woolstone**

Two wonderful gardens, within walking distance of each other, together offering topiary, herbaceous borders, wild garden, vegetable garden, rock garden, stream and open views across countryside and White Horse Hill.

All proceeds to CPRE Oxfordshire, the Countryside Charity.

## **The Comet Minibus**

Have you ever thought about using the weekly minibus service into Abingdon, that runs on Monday mornings? Villagers who use it, use their time in Abingdon for all sorts of things: visiting the doctor's surgery, shopping, visiting the Monday market, meeting friends, or having a coffee. It is available to everyone in the village, whatever age you might be!

The minibus leaves Appleton at 10.00 and returns from Abingdon at 1pm. You can pick up the Comet near School Lane and on Netherton Road near the village hall.

All we ask is that you donate £3.00 towards the return cost of your journey. There is a money box on the Post Office counter that can be used for the donations. The additional running costs of running the service are met by Appleton with Eaton Parish Council and Fyfield and Tubney Parish Council.

Oxfordshire County Council is undertaking a number of initiatives, including:

### **EV Car Clubs**

We are working with city and district councils - and a number of commercial car club operators - offering fully battery electric cars for residents to use on a pay-per-use basis. This can be for as little as an hour, and up to a few days. There has never been a better time to give car clubs a go!

### **No Mow May**

No Mow May is Plantlife's annual campaign to give wildlife a much-needed boost during summer. Could you join us in taking part, by not mowing all or some of the green space you own or manage?

Letting wildflowers and grasses grow during May will provide a feast for pollinators, as well as helping to tackle climate change.

### **Oxon Travel X**

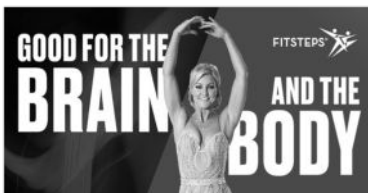
This is where residents and local businesses can find out more about incidents on local roads, public transport updates and any traffic delays.

For more information see [www.oxfordshire.gov.uk](http://www.oxfordshire.gov.uk)



**FITSTEPS DANCE FITNESS:** Starts after Easter on 15<sup>th</sup> April

Dance yourself fit for the Spring – it's lots of fun! No dance experience or partners needed. Suitable for all levels – come along and see what it's all about - your first session is free. Sessions on Monday afternoons in Appleton Village Hall: Contact [Alison.fitsteps@outlook.com](mailto:Alison.fitsteps@outlook.com) for more information



**MOSSINATOR®**  
ROOF CLEANING SYSTEMS

- Moss Removal & Roof Cleaning
- Patio & Driveway Cleaning
- Render & Brickwork Cleaning
- Solar Panel & Skylight Cleaning
- Installation of Bird Protection
- Chimney Cowl Installation

Enhance the appearance of your property with our quality assured friendly service  
[info@mossinator.co.uk](mailto:info@mossinator.co.uk) - 01865 362797

# Advertiser

Deadline for July issue:

**19th June** (19th of the month is the usual deadline)

## Notices for village organisations

All printed copy to the shop or by email to

editor.advertiser@gmail.com before the deadline. Please email if you can!

No formal payment is required but we ask for a donation towards the running costs of the Advertiser: between £5-50 depending on the length and frequency of entries. Please try to restrict your item to half a page maximum. Liaise with Wanda Todd to agree an appropriate donation.

## Advertisements

To book advertising space:

email Wanda Todd: accounts.advertiser@hotmail.co.uk

2012 Advertising charges per issue

- Listing:

30p per word of 3 letters or more and a minimum of £3.00 per advert. Each telephone and email address is to count as a word

- Display adverts:

£25 for a quarter page

Please indicate whether you want (1) a display advert or (2) a listing. If you want a listing the charge is made per word so please either supply the text or say how many words. Note that payment is required in advance, and for long-term adverts we would like 3 months in advance.

Cheques payable to Appleton PCC

and sent to Wanda Todd, 12 Badswell Lane, Appleton OX13 5JN



**Milletts**  
FARM CENTRE

FIELD | FAMILY | FORK

Farm Shop  
Farmhouse Kitchen  
Garden Centre  
Flower Market Café  
Falconry Centre  
Fishing Lake

The Beach  
Pick Your Own  
Loads of events!  
Beauty Within  
Farm Zoo  
Sprouts Play Barn

Kingston Road | Frilford | Nr Abingdon | OX13 5HB  
[www.millettsfarmcentre.com](http://www.millettsfarmcentre.com)

## PELLMANS

Your Local Solicitors

- **Business and Employment Law**  
Contracts, Legal Compliance & Disputes
- **Property**  
Buying & Selling Homes, Commercial & Agricultural
- **Wills, Probate and Trusts**  
Tax Planning & Lasting Powers of Attorney

**01865 884400**

**[www.pellmans.co.uk](http://www.pellmans.co.uk)**

1 Abbey Street, Eynsham, Witney, Oxford OX29 4TB

Home visits and evening appointments available

## **ADVERTISEMENTS** See p.14 for costs and deadlines

### **CARPET & UPHOLSTERY CLEANING**

unbeatable results & your  
carpets dry in approx. 1 hour! Call Grimebusters  
01865 726983



### **MARCHAM OSTEOPATH**

Do you suffer from lower back pain, sciatica,  
rheumatism, arthritis, sports injury or muscle  
tension? If so, consult your local osteopath - Sarah  
Ingram D.O., M.I.C.O., G.Os.C. registered with the  
General Osteopathic Council (Osteopath's Act  
1993), Tel. 01865 673667  
www.oxfordshireosteopath.co.uk



### **JAMES JOLLY**

Garden clearance, maintenance, hedge cutting,  
tree surgery, fencing and patio cleaning.  
Tel. 01865 390740



### **Tamsyn Lay MSc (Hons) MChiro MMCA MCTIMONEY CHIROPRACTOR - FYFIELD**

In pain or do you just require a general back  
check? Chiropractic can help with back pain and  
sciatica, neck, shoulder and hip pain, headaches,  
migraines, sports injuries and rehabilitation and  
general well-being.

13 Norwood Avenue, Southmoor OX135AD  
07810 557639/tlay@espina.co.uk



### **DAVIDSON-DECORATING**

Interior, and wallpapering.  
References available.  
Siobhan 07765780672  
davidsondecorating@gmail.com



### **APT HARD LANDSCAPING**

Paving: Fencing :Stone walling:  
Brickwork :Turfing:General garden  
maintenance

Andy:07887778784  
email:andyphomas@hotmail.co.uk



### **STELLA MOBILE HAIRDRESSER**

30 years experience. Contact Stella on 01865  
864687. mobile 07977 099975 email  
stelladixey76@gmail.com

### **OXFORD WOOD RECYCLING**

We care for our environment and transform  
lives

One stop wood shop for your DIY projects.  
Good quality hard and soft wood in many  
sizes and fabulous range of reclaimed wood  
furniture.

Find us at 4 Suffolk Way, Abingdon, OX14  
5JX

Tel 01235 861228

www.oxfordwoodrecycling.org.uk

**Appleton website is now**  
[www.appleton-eaton.org](http://www.appleton-eaton.org)

EDITOR: Helen Stedman 30 Eaton Rd,  
Appleton

Email: editor.advertiser@gmail.com

DISTRIBUTION COORDINATOR:

Sophie Willis.

Email: willissophie@googlemail.com

ACCOUNTS: Wanda Todd, 12 Badswell  
Lane, Appleton. Email:

accounts.advertiser@hotmail.co.uk

NOTE: This newsletter is also available  
on the Parish website. If you do not wish  
your item to be displayed online, please  
inform the Editor. All items are included in  
good faith, and the Appleton with Eaton  
Advertiser cannot take responsibility for  
any content.

**St Laurence Church**  
**Appleton with Besselsleigh**

**SUNDAY SERVICES**

**June 2024**

<b>Sunday 2nd</b>	<b>8.00am</b>	<b>Holy Communion (BCP)</b> (Rev Wealands Bell)
	<b>9.45 for</b>	<b>All-Age Service</b> (Rev Wealands Bell)
	<b>10.00am</b>	Coffee & Pastries before the Service
<b>Sunday 9th</b>	<b>10.00am</b>	<b>Holy Communion</b> (Rev Vernon Orr)
	<b>6.00pm</b>	<b>Evensong (BCP)</b> (Pete Day)
<b>Sunday 16th</b>	<b>10.00am</b>	<b>Holy Communion</b> (Rev Wealands Bell)
<b>Sunday 23rd</b>	<b>10.00am</b>	<b>Holy Communion</b> (Rev Kevin Mentzel)
	<b>6.00pm</b>	<b>Evensong (BCP)</b> (Pete Day)
<b>Sunday 30th</b>	<b>10.00am</b>	<b>Holy Communion</b> (Rev Nigel Knights Johnson)
<b>Sunday 7th July</b>	<b>8.00am</b>	<b>Holy Communion (BCP)</b> (Rev Glynis Beckett)
	<b>10.00am</b>	<b>Holy Communion</b> (The Venerable David Tyler – Archdeacon of Dorchester)
<b>Tuesday 9<sup>th</sup> July</b>	<b>6.00pm</b>	<b>Service for the Induction of Rev Wealands Bell as Rector of Appleton with Besselsleigh</b>

**The church building is open every day 9am to 5pm for all to visit**

**Who to Contact:**

For enquiries about baptisms, weddings, funerals, pastoral care, holy communion at home and the church building and churchyard, please contact one of the churchwardens:

Jane Cranston: 01865 863681; jane@cranstonjane.co.uk or

Pete Day: 01865 862671; phm.day202@btinternet.com